

## SEAMLESS DATA TRANSFER USER MANUAL



### Specification

<b>Power input</b>	: Lithium Battery 3.6V/14Ah
<b>Maximum Server Connection</b>	: 5000 Cycles
<b>Flow Meter Interface</b>	: Pulse Input Active/Passive
<b>Minimum Pulse Width</b>	: 500uS
<b>Modem Frequency</b>	: 900Mhz/1800Mhz
<b>Modem GPRS Class</b>	: Multi Class 12
<b>Modem TX Power</b>	: 2W @ GSM 1900, 1W @DCS 1800
<b>Operating Temperature</b>	: -30DegC to 70DegC
<b>Storage Temperature</b>	: -40DegC to 85DegC
<b>Standard</b>	: IP65
<b>Dimension</b>	: L200xH120xD80

## 1.0 Normal Menu

S No	Description	Function
1	SET Key	Nil
2	INC Key	Nil
3	DEC Key	Nil

## LCD Display

S No	Display	Function	Description
1	S90 ID00001 1m	Actual Value Display	<b>S90</b> – Last Connection GSM Signal Strength <b>ID00001</b> – Instrument Serial No/ID for data Export to WEB 1m – Elapsed Minutes Transmission Interval
2	000000m3 BAT14	- Do -	Six Digit Totalizer value, Accumulated Pulse Input from Flow meter BAT Percentage 14 = Battery Full 8 = Battery Down
3	NO Display	- Sleep Mode -	<b>During Power up Data will be transmitted once and system will go to Sleep. LCD Will be OFF. Power Up after Set Interval in minutes.</b>

## LED INDICATION

S No	Display	Function	Description
1	TX	NA	
2	RX	NA	
3	Network	GSM	GSM Network Status Power UP During Transmission On time=off time = No Network On time<<off time = Network OK

## 2.0 SETTING MENU

While Pressing SET key Power up Instrument, Instrument Enters into Setting Menu

S No	Description	Function
1	<b>SET Key</b>	Shift Next Digit, Store Setting, Configure Modem
2	<b>INC Key</b>	Value Increment
3	<b>DEC Key</b>	Value Decrement
4	<b>INC and DEC Simultaneously</b>	Previous Menu

**Note : Controller Operating Frequency is very low for Battery Operation.Key sensing time is higher. 1sec press and 1sec release.**

**LCD DISPLAY**

S No	Display	Function	Description
1	00 APN	Access Point Name	00 - Airtel 01 – IDEA 02 – Reliance 1 03 – Reliance 2 04 – Tata Docomo 05 – VODAPHONE 06 – BSNL 07 – BSNL South XX – Airtel
2	00001 ID	Inst Serial Number	00001 to 99999, Server Export ID
3	0001 MIN	Data Upload Interval	0001 to 9999 Minutes
4	000000 TOTOFFSET	Match SDTB Totalizer with Flow Meter	000000 to 999999m3 Shows Last Accumulated Value
5	0 PULSECNT	Mechanical Flow meter Calibration	Use this menu to read pulse count for 1cubicmeter.
6	001 KFACT	K Factor	Enter the value read in Pulse count menu for 1cubicMeter.
7	PA 000000 C 000000	Totalizer validation	PA = Actual Pulse C = Actual Pulse/Kfactor
4	11111111..	Display Check	111... to 999.... Auto scroll
5	Modem con	GSM Modem Config	Modem Auto test NO SIM – Check SIM Holder NO Network – Activate SIM for GPRS connection.

**3. FAQ**

S No	Issue	Solutions
1	Totalizer = 0	Check Flow meter Magnetic Switch
2	NO SIM	Check SIM Position
3	NO Network	Activate SIM. Check Browsing on any mobile Phone with this SIM
4	ERROR during server connect.	Enable SIM for 2G data connection
5	Server connect OK, But No data log in WEB	Check 2G data connection balance and Recharge.

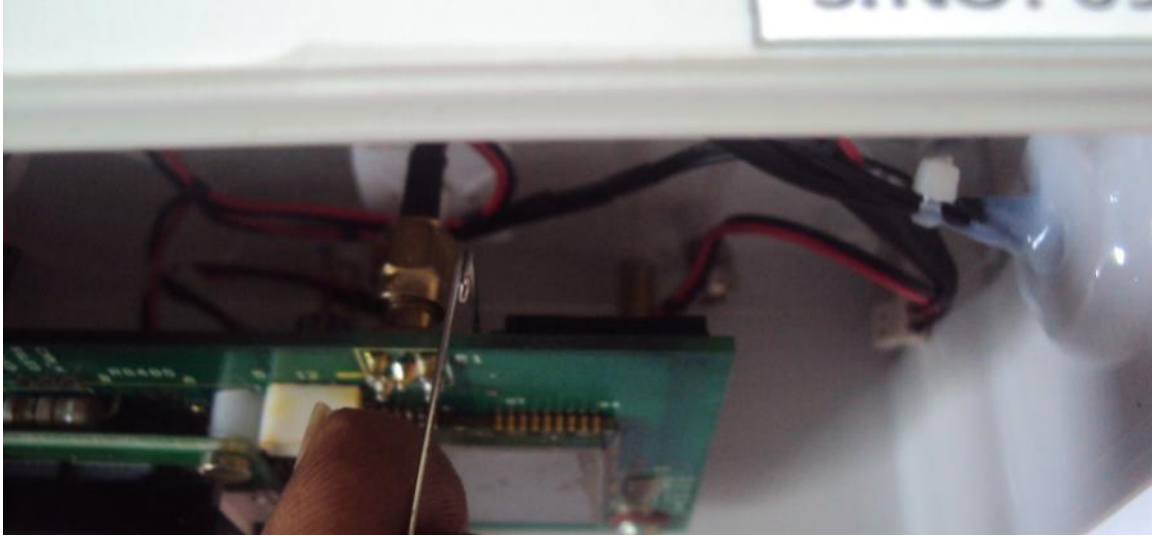
6	After IP address Display, No SENDOK message. Instead ERROR Display.	Check 2G data connection balance and Recharge.
7	No IP address Display.	Select correct APN for the service Provider. Check Browsing on any mobile Phone with this SIM
8	First time Data transmission Fails. During Battery Connect.	Since system operates at very low power. Last Residue power remains. Remove the Battery Power wait for 1min and Reconnect to Board.
9	Network LED not glowing. During first time Battery Connect.	Since system operates at very low power. Last Residue power remains. Remove the Battery Power wait for 1min and Reconnect to Board.
10	Transit	During Transit Battery connector can be removed to increase Battery Life.

### Installing New SIM

Step 1: Remove Instrument Top Cover



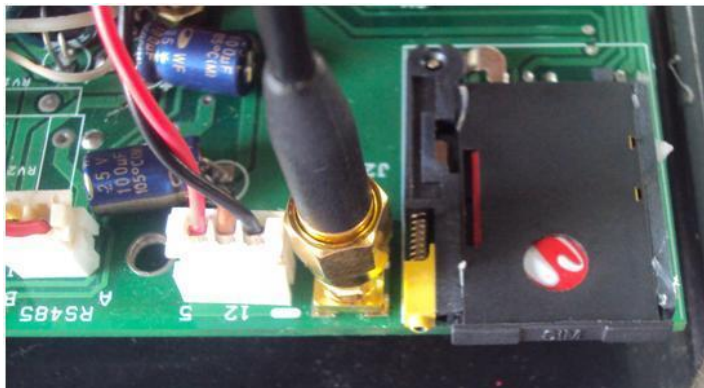
Press Eject Knob With a Nail, Don't use Screw Driver.



Place SIM

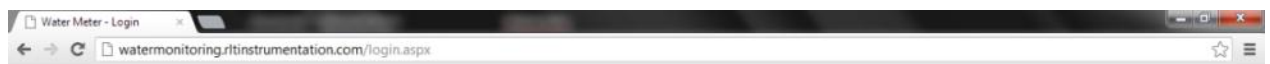


Insert in Holder



**WATER METER - ADDING USER IN WEB**

[www.rtinstrumentation.com](http://www.rtinstrumentation.com)



Login to Water Monitoring System

Login

admin

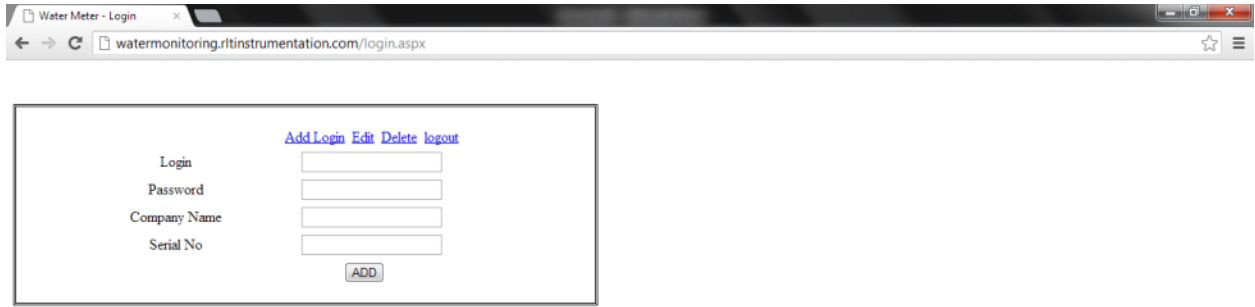
Password

\*\*\*\*\*

Login



Login : ncctesting  
Password : password

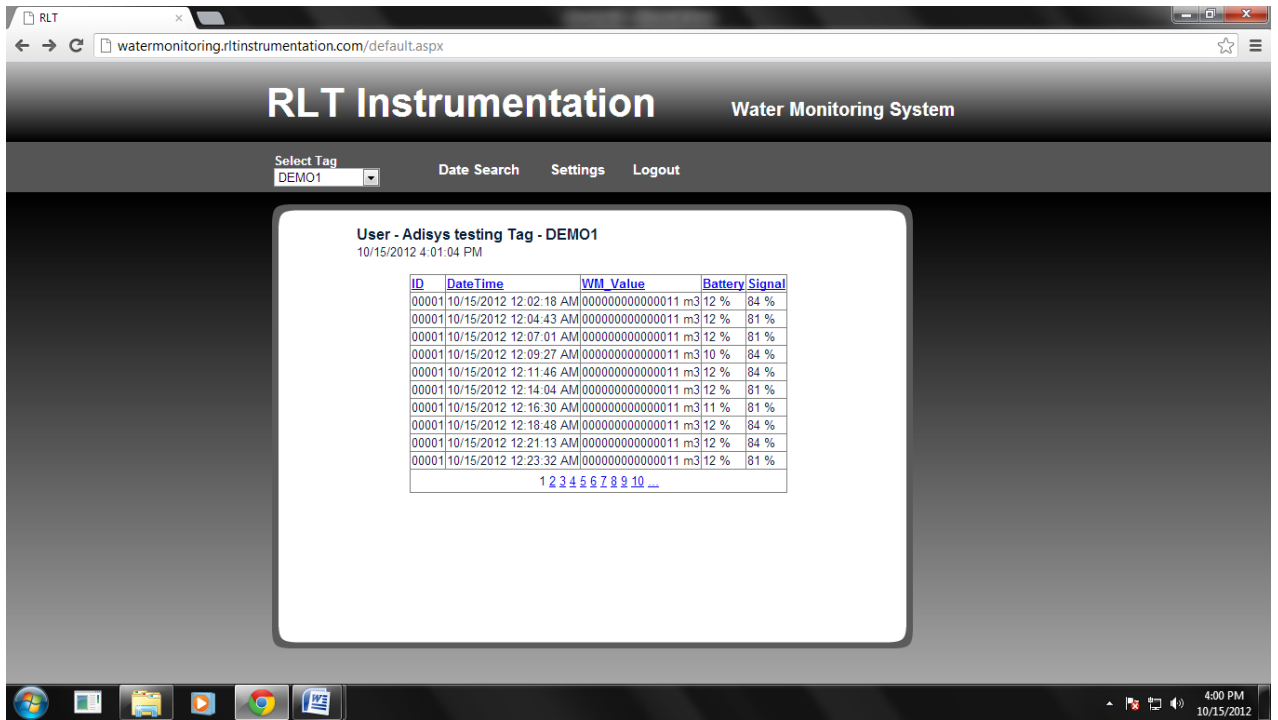


- Login** : Type required login ID
- Password** : Type required password
- Customer Name** : Display in the TOP of user page and in excel report
- Serial No** : First 2 Digit of 5 Digit serial No/ID in the field instrument (SDTS-1)

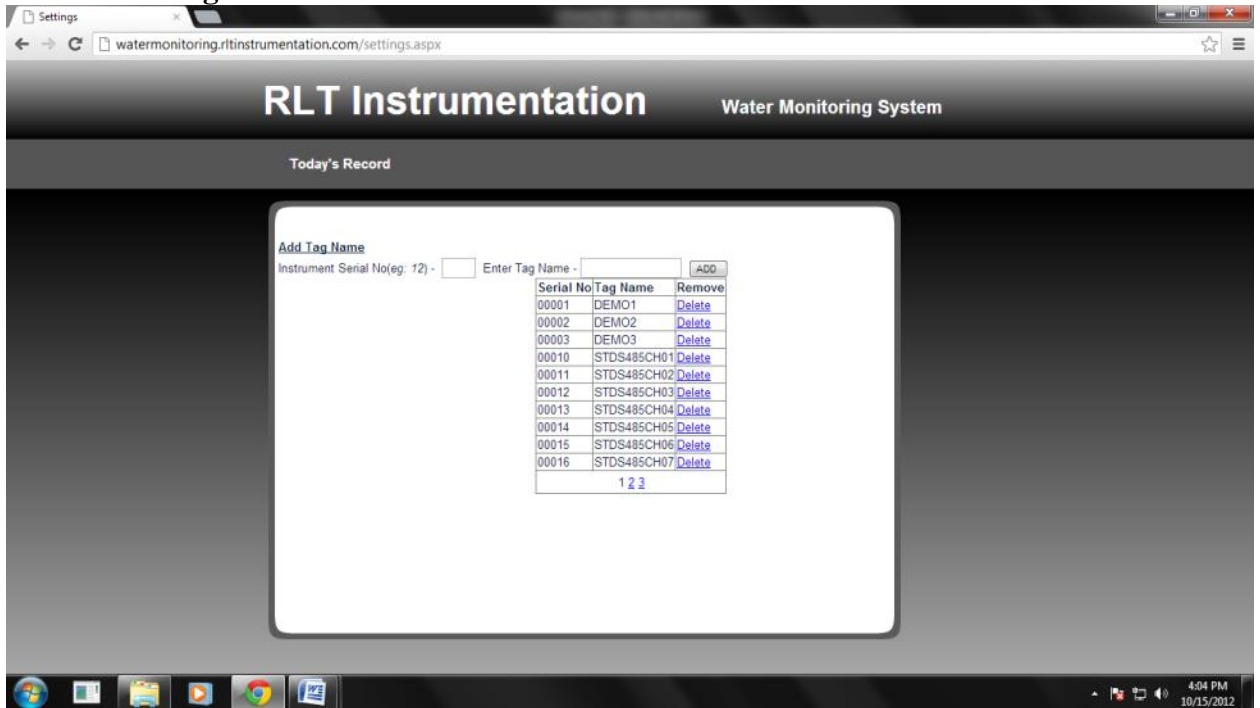
**ADDING INSTRUMENTS IN USER**



log in with the user name and password



**Enter in Settings menu**



**Instrument Serial No:** Enter Last 3 digit of the Field Instrument Serial no/ID (SDTB-1)  
**Enter Tag Name:** Type in required Name for the field Instrument (SDTB-1)